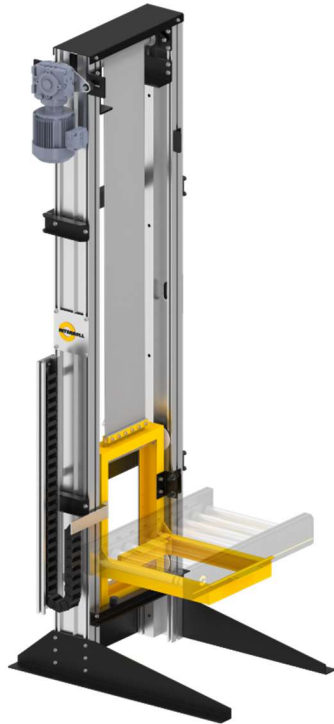




RM6008

Interroll Lift



Product description

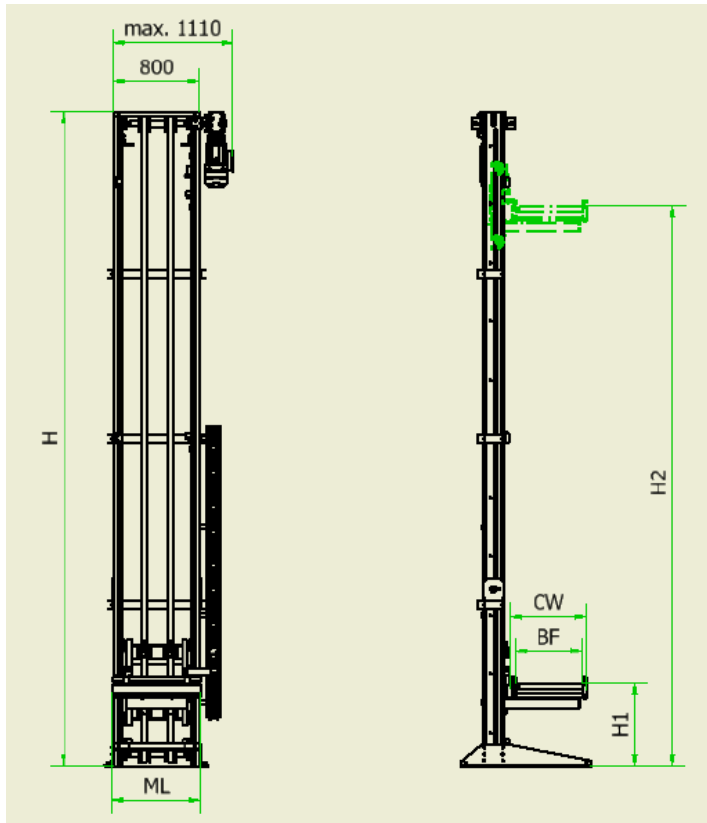
This vertical conveyor consists of a column construction and a carriage upon which conveyor components can be mounted. Lifting motion is performed by two toothed belts. The planned drive is located at the top. Integrating an encoder is possible. This lift can optionally be used at higher speeds and in several approach positions.

Technical Data

General technical data	Max. load capacity *	260 kg
	Stroke velocity	0,1 to 1,0 m/s
	Ambient temperature	-5 to +40 °C
	Max. stroke height	8000 mm
	Startup positions	Min. 2
	Lifting column	200 x 80 mm (Aluminum profile)
Drive	Motor type	Worm gear motor with brake (IE3, frequency regulation on site)
	Rated voltage	400 V / 50 Hz / 3 Phases
	Max. electrical power	1,5 to 3,0 KW
	Drive medium	Toothed belt

* Max. load capacity consists of material to be conveyed, fork weight and conveyor weight and can vary depending on the design of the conveyor and the lifting fork type.

Dimensions



BF	Between frames	420, 620, 840 mm, others on request
H1	Upper lever dimension	Min. 500 mm
H2	Lower lever dimension	H1 + stroke height
H	Height	H2 + 675 mm (BF 420) / +875 mm (BF 620) / +1095 mm (BF 840)
CW	Width of mounted conveyors	Max. 1300 mm
ML	Width of mounted conveyors**	Max. 1440 mm

** If mounted conveyor is longer, a special fork may be required!

Note: The upper part of the lifting station must be supported on site above an overall height of 4000 mm.

Scope of supply

- The module is fully assembled, including sensor system, but is not electrically cabled.
- Energy chain is pre-installed
- Please request protective grid and safety elements separately
- Without conveyor module